

**Aimetis Symphony™
AXIS Access Control
Integration Guide**

Disclaimers and Legal Information

Copyright© 2015 Aimetis Corp. All rights reserved.

This material is for informational purposes only. Aimetis makes no warranties, express, implied or statutory, as to the information in this document.

Complying with all applicable copyright laws is the responsibility of the user. Without limiting the rights under copyright, no part of this document may be reproduced, stored in or introduced into a retrieval system, or transmitted in any form or by any means (electronic, mechanical, photocopying, recording, or otherwise), or for any purpose, without the express written permission of Aimetis Corp.

Aimetis may have patents, patent applications, trademarks, copyrights, or other intellectual property rights covering subject matter in this document. Except as expressly provided in any written license agreement from Aimetis, the furnishing of this document does not give you any license to these patents, trademarks, copyrights, or other intellectual property.

Aimetis and Aimetis Symphony are either registered trademarks or trademarks of Aimetis Corp. in the United States and/or other countries.

Portions Copyright© 1993-2015 ARH Inc. Portions of this software are based in part on the work of the Independent JPEG Group.

Contact Us

For the most up-to-date contact information go to www.aimetis.com.

Table of Contents

AXIS Access Control Integration

Supported Versions	1
Work Flow	1
Task 1: Configure AXIS controller	2
Task 2: Create AXISPACSListener Windows Service in Symphony Server	2
Task 3: Add Device in Symphony	3

1 AXIS Access Control Integration

Supported Versions

Symphony Product Version	Axis A100 Network Door Controller Version
6.14	1.20.2
6.14.1	1.25.2

Work Flow

- [Task 1: Configure AXIS controller](#)
- [Task 2: Create AXISPACSListener Windows Service in Symphony Server](#)
- [Task 3: Add Device in Symphony](#)

Task 1: Configure AXIS controller

The information below is subject to change. For the most up-to-date information, see the AXIS Entry Manager documentation.

1. Log on to the device through the web interface.
2. In the AXIS Entry Manager:
 - a. Deactivate stand-alone mode.



Stand-alone mode is for one controller only, it's activate by default. Multiple controllers can work separately in stand-alone mode as well. But in order to link them together, stand-alone mode must be deactivated.

- b. Add users and doors.
- c. Add schedules.
- d. Configure all naming (note if naming changed on controller after connected to Symphony, you must reconnect to Symphony).

Task 2: Create AXISPACSLISTENER Windows Service in Symphony Server

1. From Windows® command prompt, enter the following:

```
sc create "AI AXISPACSLISTENER" binPath= "c:\program files (x86)\aimetis\symphony\_bin\AXISPACSLISTENER.exe"
```

2. Restart Server Services to run the AXISPACSLISTENER service.

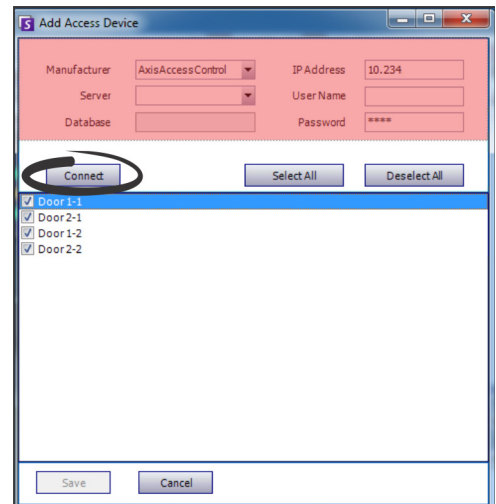
Task 3: Add Device in Symphony

Important: In any installation of Symphony, you are allowed only one type of access control. You cannot use Axis if another access control device is already in use.



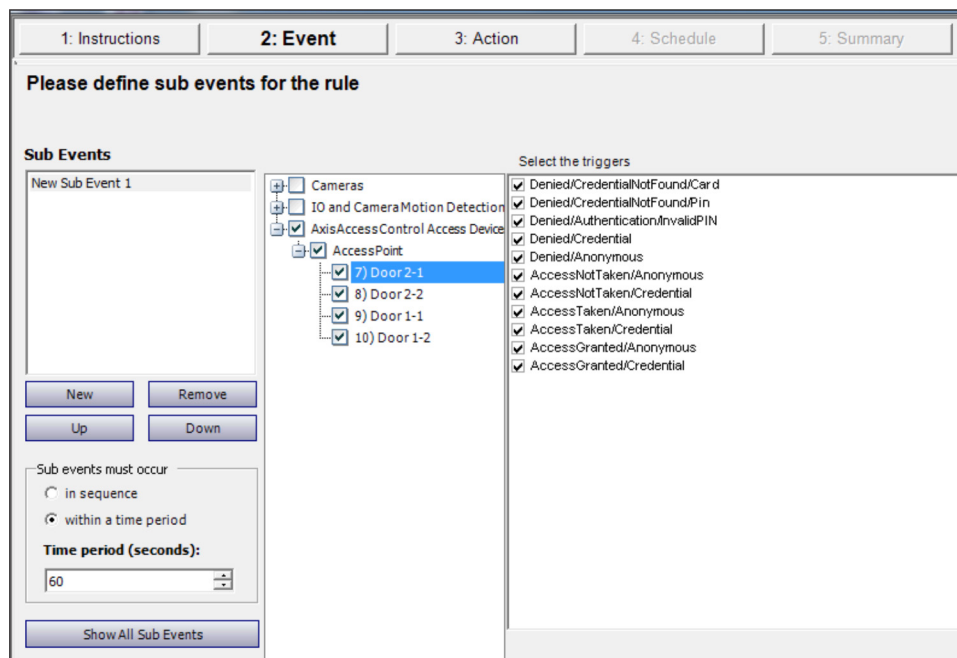
The Symphony Pro license is required to complete the following steps.

1. From the **Server** menu, select **Add Access Device** to open the Add Access Device dialog box.
2. From the **Manufacturer** field, select **Axis**.
3. In the **IP Address** field, enter the IP address of the Axis server. Select any controller IP in non-standard mode.
4. Enter a **Username** and **Password** defined on controller.
5. Click **Connect**.
6. Select the devices and click **Save**.
7. Create a new rule by selecting desired devices corresponding triggers and the tracker you want to forward the Axis events.

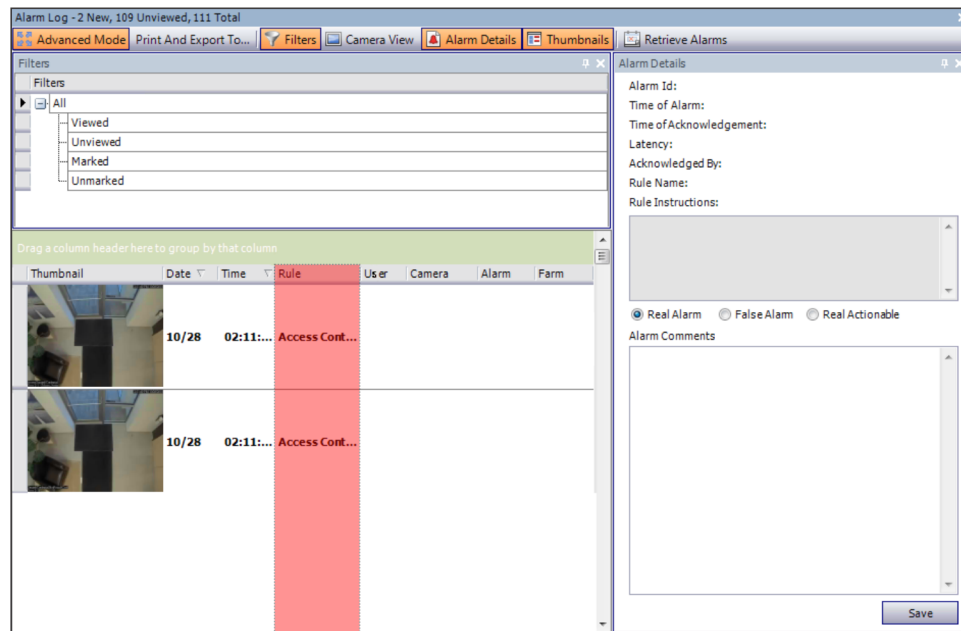


NOTE: If the name on the controller was changed you must reconnect with Symphony.

8. For instructions in using the **Rule Wizard**, see the Symphony web help.



9. Alarm details are saved in the AXIS database.



10. Place the cameras on the **Map**.

- Alarms and events from Remote Arming Terminal and Elevators are not supported.
- All AXIS devices are shown as a door on the map.

11. For instructions on using a map in Symphony, see the online help.

