

**Aimetis Symphony™
P2000 Access Control
Integration Guide**

Disclaimers and Legal Information

Copyright© 2015 Aimetis Corp. All rights reserved.

This material is for informational purposes only. Aimetis makes no warranties, express, implied or statutory, as to the information in this document.

Complying with all applicable copyright laws is the responsibility of the user. Without limiting the rights under copyright, no part of this document may be reproduced, stored in or introduced into a retrieval system, or transmitted in any form or by any means (electronic, mechanical, photocopying, recording, or otherwise), or for any purpose, without the express written permission of Aimetis Corp.

Aimetis may have patents, patent applications, trademarks, copyrights, or other intellectual property rights covering subject matter in this document. Except as expressly provided in any written license agreement from Aimetis, the furnishing of this document does not give you any license to these patents, trademarks, copyrights, or other intellectual property.

Aimetis and Aimetis Symphony are either registered trademarks or trademarks of Aimetis Corp. in the United States and/or other countries.

Portions Copyright© 1993-2015 ARH Inc. Portions of this software are based in part on the work of the Independent JPEG Group.

Contact Us

For the most up-to-date contact information go to www.aimetis.com.

Table of Contents

Configuring P2000 Access Control Integration

Supported Version	1
Work Flow	1
Task 1: Configuring P2000 Server for Symphony Access Control Integration	2
Task 2: Configuring Symphony for P2000 Access Control Integration	2
Task 3: Selecting the Event Sources	3
Task 4: Defining Rules	4
Task 5: (Optional) Adding Sub-devices/Event Sources to a Map	4

1

Configuring P2000 Access Control Integration

Supported Version

Symphony Product Version	P2000 Version
6.13 Server and Client	v3.11.30 Server and Client

Work Flow

- [Task 1: Configuring P2000 Server for Symphony Access Control Integration](#)
- [Task 2: Configuring Symphony for P2000 Access Control Integration](#)
- [Task 3: Selecting the Event Sources](#)
- [Task 4: Defining Rules](#)
- [Task 5: \(Optional\) Adding Sub-devices/Event Sources to a Map](#)

Task 1: Configuring P2000 Server for Symphony Access Control Integration

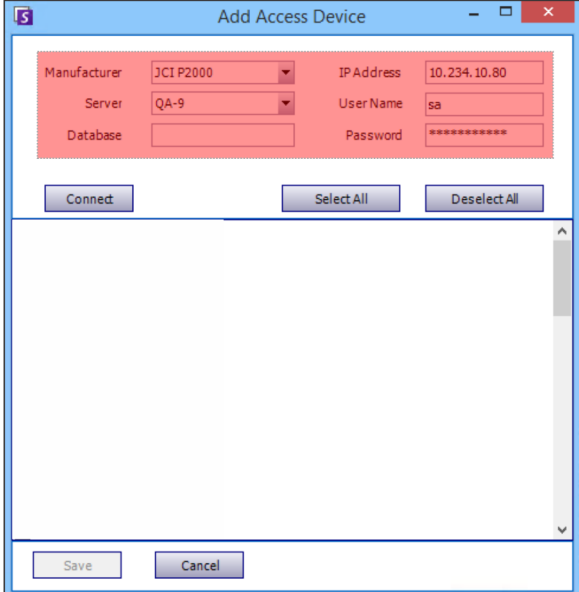
1. Launch the P2000 software and define a remote server.
2. Enter the following information to define a remote server:
 - IP Address: Enter the IP address of the Symphony server designated as the P2000 Event receiver.
 - Port: 50024
 - Protocol: HTTP Post XML Protocol

For details consult the P2000 setup documentation.

Task 2: Configuring Symphony for P2000 Access Control Integration

1. From the computer designated to run a Symphony Server, ping the IP address of the computer running the P2000 server.
2. Install a Symphony Server and Client. For details, see the [Aimetis Symphony™ Installation Guide](#).
3. If enabled, the “JCI P2000” Access Control Provider/Server will listen on TCP/IP port 50,024 (via **AI InfoService**).
4. Launch Symphony Client and wait for the connection to the designated Symphony Server/Farm to complete.
5. From the **Server** menu, select **Add Access Devices**.
6. From the **Manufacturer** drop-down field, select **JCI P2000** as the access control provider.
7. In the **IP Address** field, enter the IP address of the PC running the P2000 server software.
8. Enter `sa` in the **User Name** field.
9. Enter `Master 2000` in the **Password** field.

NOTE: No entry is required in the **Database** field.

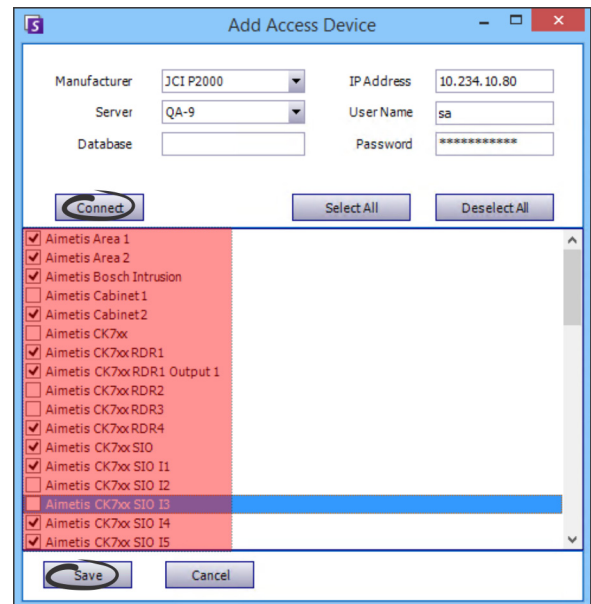


Task 3: Selecting the Event Sources



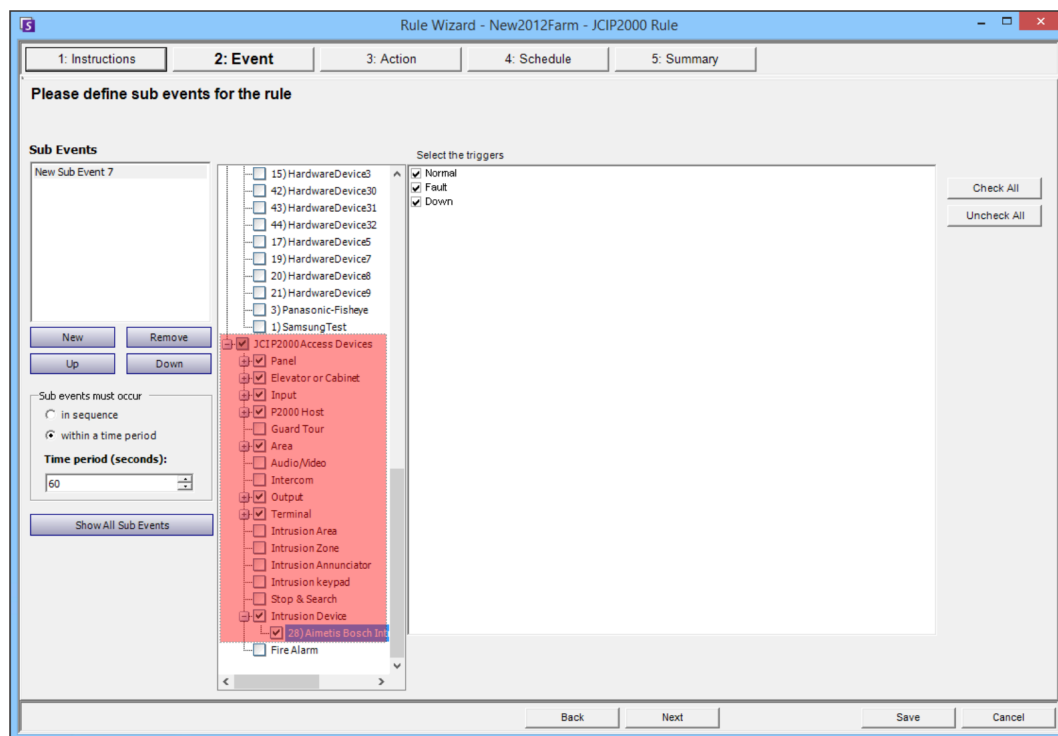
If a different Access Control Provider was selected or the Access Control was configured for the first time prior to switching to JCI P2000, **AI InfoService** will restart automatically so as to load the newly selected P2000 provider. Symphony Access Control functionality works with only one provider at any time.

1. Click **Connect** to see a list of devices and event sources.
2. Select all the sources for which you want to receive events.
3. Click **Save** to save the current JCI P2000 Access Control provider settings and wait for the devices to be displayed in the main device tree.



Task 4: Defining Rules

1. From the **Server** menu, select **Configuration** to open the Server Configuration dialog box.
2. Click **Rules** and create a new rule. For details, see the [Aimetis Symphony™ Installation Guide](#).
3. Select at least one JCI P2000-related Event Source and at least one event for that Source.
NOTE: All the actual sources and the events are grouped by Source category.
4. Select a particular camera output or all cameras.
5. Save the new rule.



Task 5: (Optional) Adding Sub-devices/ Event Sources to a Map

You can add one of the sub-devices or events related to the P2000 rule as an icon on a map. The icon will flash or change color depending on the triggered event. Consult the Symphony 6.14 online help Maps section for instructions.