

# **Aimetis Symphony**

## **6.14 Release Notes**

## Disclaimers and Legal Information

Copyright© 2017 Aimetis Inc. All rights reserved.

This material is for informational purposes only. AIMETIS MAKES NO WARRANTIES, EXPRESS, IMPLIED OR STATUTORY, AS TO THE INFORMATION IN THIS DOCUMENT. Complying with all applicable copyright laws is the responsibility of the user. Without limiting the rights under copyright, no part of this document may be reproduced, stored in or introduced into a retrieval system, or transmitted in any form or by any means (electronic, mechanical, photocopying, recording, or otherwise), or for any purpose, without the express written permission of Aimetis Corp.

Aimetis may have patents, patent applications, trademarks, copyrights, or other intellectual property rights covering subject matter in this document. Except as expressly provided in any written license agreement from Aimetis, the furnishing of this document does not give you any license to these patents, trademarks, copyrights, or other intellectual property.

Aimetis and Aimetis Symphony are either registered trademarks or trademarks of Aimetis Corp. in the United States and/or other countries.

## Document History

September 2017	Release 6.14.9.7
July 2017	Release 6.14.9.6 (private release)
July 2017	Release 6.14.9.5
May 2017	Release 6.14.9.4
April 2017	Release 6.14.9.3 (private release)
March 2017	Release 6.14.9.2
January 2017	Release 6.14.9.1
November 2016	Release 6.14.9
October 2016	Release 6.14.8.8 (private release)
October 2016	Release 6.14.8.7
September 2016	Release 6.14.8.6
August 2016	Release 6.14.8.5 (private release)
August 2016	Release 6.14.8.3 (private release)
July 2016	Release 6.14.8.2 (private release)
July 2016	Release 6.14.8.1
June 2016	Release 6.14.8

June 2016	Release 6.14.7.8 (private release)
May 2016	Release 6.14.7.7 (private release)
April 2016	Release 6.14.7.6 (private release)
April 2015	Release 6.14.7.5 (private release)
April 2016	Release 6.14.7.4 (private release)
April 2016	Release 6.14.7.3 (private release)
March 2016	Release 6.14.7.2 (private release)
March 2016	Release 6.14.7.1
February 2016	Release 6.14.6.3 (private release)
February 2016	Release 6.14.6.2
February 2016	Release 6.14.6.1
December 2015	Release 6.14.6
November 2015	Release 6.14.5.3 (private release)
November 2015	Release 6.14.5.1
October 2015	Release 6.14.5
September 2015	Release 6.14.4
August 2015	Release 6.14.3.6 (private release)
August 2015	Release 6.14.3.5 (private release)
July 2015	Release 6.14.3.4 (private release)
July 2015	Release 6.14.3.3
July 2015	Release 6.14.3.2 (private release)
July 2015	Release 6.14.3.1
July 2015	Release 6.14.3
July 2015	Release 6.14.2.4 (private release)

June 2015	Release 6.14.2.3 (private release)
June 2015	Release 6.14.2.2 (private release)
June 2015	Correction to AIR-24392
May 2015	Release 6.14.2.1 (private release)
May 2015	Release 6.14.2
April 2015	Release 6.14.1.2
April 2015	Release 6.14.1.1
March 2015	Release 6.14.1
March 2015	Release 6.14.0.2
February 2015	Release 6.14

## Version 6.14.9.7

This release includes new features, improvements, and fixes from previous private releases.

**Note:** Symphony 6.14.9.7 supports Symphony Mobile Bridge 2.2.3 through 2.6.0.5.

### Improvements

Issue ID	Description
AIR-32856	The localized strings for camera status appear correctly in the Symphony client interface.

### Fixes

Issue ID	Description
AIR-29478	The Czech language is available in the regional settings in the Symphony Client.
AIR-32215	Incorrect regional information for license plates was removed from the Symphony client interface.
AIR-32819	PTZ cameras return to the home position when automatic tracking ends.
AIR-33076	Symphony supports the latest Axis A1001 access control device firmware.
AIR-33079	The Axis PACS listener works as expected when names contain umlauts.
AIR-33198	Audio works as expected for Axis M3037 cameras.
AIR-33233	The performance of the Infoservice service has improved.

## Version 6.14.9.6

**Note:** Symphony 6.14.9.6 supports Symphony Mobile Bridge 2.2.3 through 2.6.0.5.

### Fixes

Issue ID	Description
AIR-32731	Symphony synchronizes as expected with Active Directory.

# Version 6.14.9.5

**Note:** Symphony 6.14.9.5 supports Symphony Mobile Bridge 2.2.3 through 2.6.0.5.

## New features

Issue ID	Description
AIR-28067	Symphony supports Vivotek Fisheye FE8391-V cameras.

## Improvements

Issue ID	Description
AIR-23302	Symphony supports auxiliary commands for all camera types and sends the commands to the correct IP address.

## Fixes

Issue ID	Description
AIR-30374	The License Plate Recognition analytic uses memory resources more effectively.
AIR-31704	Scheduled reports run at the correct time.
AIR-31970	Axis: Panorama views display correctly for the M3007 cameras.
AIR-32083	Mobile Bridge reconnects successfully after Infoservice restarts.
AIR-32087	The date picker works in all time zones.
AIR-32143	The License Plate Recognition driver does not create extraneous processes.
AIR-32585	Multiple rules that use the same location and schedule, but different events, work as expected.
VIS-274	Occasional Indoor/Outdoor Motion Tracking Add-on crashing resolved.

# Version 6.14.9.4

**Note:** Symphony 6.14.9.4 supports Symphony Mobile Bridge 2.2.3 through 2.6.0.3.

## Improvements

Issue ID	Description
AIR-31868	ALPR: Processing continues after a hardware license disconnect.

## Fixes

Issue ID	Description
AIR-31663	Panels in a docked multiview configuration display video properly when starting the Symphony Client.
AIR-31756	The camera configuration page uses the selected FPS rather than the FPS at the top of the FPS list (sorted in descending order).
AIR-31876	Footage files are closed after 1 hour of not writing to the file.
AIR-31883	Joysticks reconnect after power loss without restarting the Client.
AIR-31965	Camera tours continue when the video quality is poor.
PSA-352	Certain I/O events on Aimetis Physical Security Appliances no longer cause a scheduler crash.



## Version 6.14.9.3

**Note:** Symphony 6.14.9.3 supports Symphony Mobile Bridge 2.2.3 through 2.6.0.3.

### Fixes

Issue ID	Description
AIR-31662	Video in the Symphony Client works as expected with Internet Explorer in compatibility mode.
AIR-31712	Updating multiple license plates does not cause SQL errors.
AIR-31820	The Tracker does not stop responding when the TCP Listener receives metadata.
AIR-31838	The Mobile Bridge does not stop responding because of unsupported characters when logging requests.

# Version 6.14.9.2

**Note:** Symphony 6.14.9.2 supports Symphony Mobile Bridge 2.2.3 through 2.6.0.3.

## New Features

Issue ID	Description
AIR-31242	Failover notifications Added notifications when a camera failover occurs.

## Improvements

Issue ID	Description
AIR-25628	Added a new Latin Engine for the License Plate Recognition analytic to improve performance and support new license dongles.

## Fixes

Issue ID	Description
AIR-31023	Panels in a docked multiview configuration display video properly when starting the Symphony Client.
AIR-31431	Access device messages trigger alarms as expected.
AIR-31449	Tracker does not prevent DIO trigger requests from triggering License Plate Recognition alarms.
AIR-31518	Cleaner runs at the appropriate I/O priority.
AIR-31576	SQL deadlocks on the certain tables have been removed.
AIR-31579	

# Version 6.14.9.1

**Note:** Symphony 6.14.9.1 supports Symphony Mobile Bridge 2.2.3 through 2.2.6.

## Improvements

Issue ID	Description
AIR-31020	The SDK includes the ability to generate a JPEG.

## Fixes

Issue ID	Description
AIR-30744	Bug reports are properly collecting server logs.
AIR-30767	Alarms are not triggering multiple times, causing dropped frames.
AIR-30817	Scheduled reports include the correct data.
AIR-30827	Restoring a configuration takes the appropriate time (i.e., is faster) and does not cause database issues.
AIR-31063	Axis: Residual images do not remain on the screen after configuring AOOT settings.

# Version 6.14.9

**Note:** Symphony 6.14.9 supports Symphony Mobile Bridge 2.2.3 through 2.2.6.

## New Features

Issue ID	Description
AIR-30483	Log packages Added a utility to restore the log package to the database.

## Improvements

Issue ID	Description
AIR-30630	Updated the LPR drivers to determine the version of the hardware dongle and manage functionality accordingly.

## Fixes

Issue ID	Description
AIR-29157	Symphony displays the correct footage for cameras with multiple streams.
AIR-30329	LPR does not create two alarms for the same license plate.
AIR-30336	Carousel does not arbitrarily reload every two minutes.
AIR-30440	Symphony is not dropping frames because of processing resource allocation.
AIR-30454	Arecont: Binning does not cause a memory leak.
AIR-30470	Scheduler is working as expected after installing the OPC service.
AIR-30480	LogPackage creates files that use the local date/time.

## Version 6.14.8.8

### New Features

Issue ID	Description
AIR-26670	Database management Symphony now includes a setting to delete license plates from the database after a specified number of days.

### Improvements

Issue ID	Description
AIR-30272	Improved the plate management service to support multiple plates and resolve IO flickering issues.

### Fixes

Issue ID	Description
AIR-30253	TrackerApp does not create unusable footage files when the storage state changes.

## Version 6.14.8.7

### New Features

Issue ID	Description
AIR-29006	Windows event log Symphony writes events to the Windows event log.

### Improvements

Issue ID	Description
AIR-27586	Included the newest ARH drivers with LPR.
AIR-27844	Automatically detect video resolution of the stream (supports Arecont “binning”).
AIR-29276	Added support for new LPR dongles and engines.
AIR-30080	Improved video rendering.

### Fixes

Issue ID	Description
AIR-29113	LPR is detecting Chinese characters correctly.
AIR-29740	Saving the layout in the Symphony Client works as expected.

---

AIR-30002	Default region in LPR works as expected without the V9 dongle.
AIR-30049	Duplicate license plates do not cause SQL exceptions.

---

## Version 6.14.8.6

### Fixes

---

Issue ID	Description
AIR-29726	LPR: Importing the LPR CSV does not overwrite the plate database.

---

## Version 6.14.8.5

Private release.

### Improvements

---

Issue ID	Description
AIR-28657	Added support for Software House CCure version 2.50.
AIR-29553	Updated the installer to include new service executable for Tyco Software House.

---

### Fixes

---

Issue ID	Description
AIR-29572	LPR: The LPR is no longer reporting string length less than the minimum plate length.

---

## Version 6.14.8.3

Private release.

### Improvements

---

Issue ID	Description
AIR-29360	Improved video rendering smoothness.

---

### Fixes

---

Issue ID	Description
AIR-27513	Resolved problem exporting video with AXIS P1427 camera.

---

## Version 6.14.8.2

Private release.

### Fixes

Issue ID	Description
AIR-29207	Direct Connection from Client to camera displays video (fixed a regression introduced in 6.14.8).
AIR-29235	Video panels no longer flash hourly.
AIR-29274	Fixed multi-stream scenario where timeline attempts to display video from January 1, 1970.

## Version 6.14.8.1

### Fixes

Issue ID	Description
AIR-29079	VE410 configuration plate scale works properly in non-English locales (where comma is used instead of period).
AIR-29137	AD connection strings over 50 characters are now supported.
AIR-29188	Video now plays via Mobile Bridge (as long as it is not MB 2.2.2).
AIR-29208	Fixed problem to prevent Mobile Bridge logs from repeatedly showing Decompression error.

## Version 6.14.8

### Fixes

Issue ID	Description
AIR-28696	Search process allows video stream selection. By default, recording stream is selected; otherwise, stream with highest resolution is selected.
AIR-28819	With FPS greater than 60, switching between cameras in Camera Tree working successfully.
AIR-28967	ALPR: descriptions correctly displayed as decorations upon plate detection and LPR search.

## Version 6.14.7.8

Private release.

### Improvements

6.14.7.8 Improvements	
Issue ID	Description
AIR-28674	Smoother video image at 8x in Symphony Player.
AIR-28707	Improved video rendering for smoother imaging.

### Fixes

6.14.7.8 Fixes	
Issue ID	Description
AIR-28802	Successfully export historical video.

## Version 6.14.7.7

Private release.

### Improvements

6.14.7.7 Improvements	
Issue ID	Description
AIR-28579	Support for PTZ files (varying PTZ speed) in new ACTi SDK.

### Fixes

6.14.7.7 Fixes	
Issue ID	Description
AIR-28477	LPR: Now accommodates digital grouping delimiters used in Europe for values entered (periods versus commas).
AIR-28533	SDK: PTZ save/load pre-set feature working correctly in Farmtest.exe.
AIR-28599	LPR: Mobile Bridge successfully receives cameras list from Symphony after clean installation.



## Version 6.14.7.6

Private release.

### Improvements

6.14.7.6 Improvements	
Issue ID	Description
AIR-28436	Farms and server listed are now sorted alphabetically by name by default.

### Fixes

6.14.7.6 Fixes	
Issue ID	Description
AIR-28326	Vivotek: Search runs successfully (additional fix to AIR-28217).

## Version 6.14.7.5

Private release.

### Improvements

6.14.7.5 Improvements	
Issue ID	Description
AIR-28166	Video rendering smooth at HD resolution and high FPS.

## Version 6.14.7.4

Private release.

### Fixes

6.14.7.4 Fixes	
Issue ID	Description
AIR-28217	Vivotek: Search runs successfully.
AIR-28227	VE500 (AOOT) working correctly with Axis devices in HTTP and HTTPS.
AIR-28228	Rule action of email notification with PTZ movement working correctly.

## Version 6.14.7.3

Private release.

### Improvements

6.14.7.3 Improvements	
Issue ID	Description
AIR-28070	Storage path validation check.

### Fixes

6.14.7.3 Fixes	
Issue ID	Description
AIR-21875	Help: Internal topic links fixed.
AIR-27902	Offline ClusterStorage issue resolved with correct directory and folder creation.
AIR-28104	CSV import working correctly.

## Version 6.14.7.2

Private release.

### Improvements

6.14.7.2 Improvements	
Issue ID	Description
AIR-27757	UserManagement SDK application usage statements updated with group permissions accepted from .csv file.

### Fixes

6.14.7.2 Fixes	
Issue ID	Description
AIR-26763	Video playback and live video working correctly after switching modes (e.g. FFWD).
AIR-27893	Preview images correctly displayed in exported video file.
AIR-28054	Symphony Tracker: Live, historical and video export working correctly with low resolution and small key frames.
AIR-28094	Axis P1346 camera with edge storage working correctly.

# Version 6.14.7.1

## New Features

### 6.14.7.1 New Features

Issue ID	Description
AIR-26447	New tool (SignalMaker.exe) to generate signal files from footage files. In <b>_tools</b> folder of your installation. Example: SignalMaker.exe <CameraID> <Year> <Month> <Day> Will generate a signal file for the specified camera and the specified GMT day.
AIR-27832	LPR report includes description column with information from Manage License Plates dialog.

## Improvements

### 6.14.7.1 Improvements

Issue ID	Description
AIR-25643	Improved support for Sureview custom message in email on alarm. See also: <a href="http://www.aimetis.com/Support/kbarticle.aspx?ID=10402">http://www.aimetis.com/Support/kbarticle.aspx?ID=10402</a>
AIR-25799	Symphony Client can now process the information entered on an XTS keyboard and display it on an LCD screen. Setup: <ol style="list-style-type: none"> <li>1. Stop Symphony Client.</li> <li>2. Configure the %appdata%\Aimetis\acc.ini file for the joystick. Enter the following in the acc.ini file:               <p><b>[joystick]</b> <b>IP=192.168.1.234</b> (default IP of keyboard) <b>Port= 34567</b> (default port of</p> </li> <li>3. In Symphony Client, enable the joystick on your PTZ camera (<b>View&gt;Joystick</b>).</li> </ol> <p>Example: Pressing a 02 preset location on the keyboard results in camera moving to preset 2 location and LCD screen displaying "Preset 02."</p>
AIR-27279, AIR-27282, AIR-27342	Security issues, whereby it was possible to obtain passwords, have been fixed.
AIR-27400	Support for AXIS A1001 with firmware v1.40.
AIR-27747	Can trigger outputs in Phoenix device from Symphony camera tree. Camera tree status updated with inputs triggered on the Phoenix device.

## Fixes

6.14.7.1 Fixes	
Issue ID	Description
AIR-26817	Smooth live video on camera with high frame rate.
AIR-27040	View Detailed Logs displays Chinese characters correctly.
AIR-27240	ACTi: live video message of dropping frames due to insufficient resources issue fixed.
AIR-27240	Live video on ACTi camera working correctly after reconnection.
AIR-27261	Rules: successfully enable/disable multiple rules from single alarm.
AIR-27261	Multiple rules successfully triggered on single alarm.
AIR-27405	Symphony working correctly when dewarp modes enabled.
AIR-27439	PSA E4000: Correct DIO state maintained after reboot.
AIR-27458	ALPR: Plates successfully trigger alarm within specified date range.
AIR-27525	Report PDF correctly rendered with traditional Chinese characters.
AIR-27641	Camera de-warping correctly restored on client restart.
AIR-27663	ALPR: Rules working correctly with lists.
AIR-27720	Scheduled reports correctly distributed at configured time.
AIR-27786	Symphony successfully upgraded using AEM auto-update feature.
AIR-27888	Scheduled report recurrence rate field correctly accepts only whole number values for time.
AIR-27889	Video image updated correctly when switching between fisheye cameras in Camera Tree.

## Version 6.14.6.3

Private release.

### Fixes

6.14.6.3 Fixes	
Issue ID	Description
AIR-27616	Camera de-warping correctly restored on client restart.

## Version 6.14.6.2

### Fixes

6.14.6.2 Fixes	
Issue ID	Description
AIR-27456	Symphony Client successfully installed on Windows 10.

## Version 6.14.6.1

### New Features

6.14.6.1 New Features	
Issue ID	Description
AIR-27546	Support for Sureview custom message in email on alarm. See also: <a href="http://www.aimetis.com/Support/kbarticle.aspx?ID=10402">http://www.aimetis.com/Support/kbarticle.aspx?ID=10402</a>

### Fixes

6.14.6.1 Fixes	
Issue ID	Description
AIR-27545	PSA E4000: Correct DIO state maintained after reboot.

# Version 6.14.6

## New Features

6.14.6 New Features	
Issue ID	Description
AIR-27005	Support for Commbox IO IP module. (Select Commbox from the Add New Hardware Device menu in Symphony.)

## Improvements

6.14.6 Improvements	
Issue ID	Description
AIR-25926	ALPR: Support for importing and exporting license plates using CSV file format.

## Fixes

6.14.6 Fixes	
Issue ID	Description
AIR-26659	Access control: Symphony working correctly with P2000 v3.13 SP2.
AIR-26712	Rule for switching on motion to other cameras working consistently.
AIR-26805	AddAlarmToCamera SDK works correctly with non-standard port.
AIR-26897	Symphony Client continues working correctly in case where context menu open on video panel and panel changes to blank.
AIR-26927	Logs messages readable in all supported languages.
AIR-26946	Client stays open consistently as expected.
VIS-239	VE180 no longer classifies rabbits as people!

# Version 6.14.5.3

Private release.

## Improvements

6.14.5.3 Improvements	
Issue ID	Description
AIR-26693	Can now configure time to revert (seconds) to previous camera for all cameras that switch on alarm.
AIR-26895	ALPR: Support for importing and exporting license plates using CSV file format.

## Fixes

6.14.5.3 Fixes	
Issue ID	Description
AIR-26899	Symphony Client continues working correctly in case where context menu open on video panel and panel changes to blank.

# Version 6.14.5.1

## New Features

6.14.5.1 New Features	
Issue ID	Description
AIR-19016	Dewarp setting for fisheye camera saved with layout.
AIR-26601	Support for RTSP streaming with decorations/boxes.

## Improvements

6.14.5.1 Improvements	
Issue ID	Description
AIR-23048	ALPR: Support for Philippines, Mongolia, and Bangladesh license plate recognition.

# Version 6.14.5

## New Features

6.14.5 New Features	
Issue ID	Description
AIR-26503	New message to notify users when Maintenance and Support has expired.

## Improvements

6.14.5 Improvements	
Issue ID	Description
AIR-24685	ALPR: Support for Egypt in license plate recognition.
AIR-26428	Support for latest AXIS A1001 firmware version 1.35.
AIR-26569	ALPR: Support for two channel ARH PCIe card for license plate recognition.

## Fixes

6.14.5 Fixes	
Issue ID	Description
AIR-25758	Footage storage path is displayed for redundant Symphony servers.
AIR-25779	Enterprise Management correctly restarts when license updated.
AIR-25798	Storage paths in AEM correctly match Symphony.
AIR-25861	Symphony Web Client respects updated permissions.
AIR-25941	Gallagher: Symphony working correctly with multiple cardholder images for each user in access control.
AIR-26320	Device model changes correctly propagated through Symphony.



## Version 6.14.4.2

Private release.

### Improvements

6.14.4.2 Improvements	
Issue ID	Description
AIR-26554	Support for latest AXIS A1001 firmware.

### Fixes

6.14.4.2 Fixes	
Issue ID	Description
AIR-26065	Motion marks on video playback because of sync issue resolved.
AIR-26521	Live and historical video successfully streamed on Grundig cameras.

## Version 6.14.4.1

Private release.

### New Features

6.14.4.1 New Features	
Issue ID	Description
AIR-26056	Connect to Camera generates random port on server for video from Mobile device.

### Improvements

6.14.4.1 Improvements	
Issue ID	Description
AIR-26066	Error logging when mobile client disconnects improved and clarified.
AIR-26156	Issue of green borders and tracker terminating on streamed versus selected resolution fixed.

# Version 6.14.4

## Fixes

6.14.4 Fixes	
Issue ID	Description
AIR-25870	Occupancy Detection working correctly for VE180 in Rule Wizard.
AIR-25945	Permission introduced in v6.14.1 <b>View Restricted Historical Video</b> has had default value changed from 60 to 99999 minutes since most customers do not restrict access to historical video by default.
AIR-25985	Resolved rare timing problem that could cause camera to drop offline.

# Version 6.14.3.6

Private release.

## Improvements

### 6.14.3.6 Improvements

Issue ID	Description
AIR-255820	Resolution when adding camera through RTSP URL is displayed in server configuration for camera.

## Fixes

### 6.14.3.6 Fixes

Issue ID	Description
AIR-25710	PSA: Automatic upgrades working successfully.
AIR-25840	LPR: Client working correctly when user draws green box in configuration.
AIR-25889	AXIS T8310: Symphony focused on correct panel when using Axis joystick/keypad in multiview.

# Version 6.14.3.5

## Improvements

### 6.14.3.5 Improvements

Issue ID	Description
AIR-25590	LPR: Pre-recording buffer now used when LPR triggered by motion or I/O.
AIR-25591	LPR: User can set millisecond value (0 default) where LPR is triggered after x milliseconds if input is on. Useful for reading plates at loading docks. Cannot be used in combination with AIR-25590.
AIR-25786	TCP stream buffer per socket/client connection now versus sub session. High resolution/high bit-rate cameras can be streamed reliably through RTSP streaming server with audio enabled.
AIR-25788	Support for SAN failover with multiple LUNs.
AIR-25795	More logging added for Axis A1001 event listener

## Fixes

### 6.14.3.5 Fixes

Issue ID	Description
AIR-25777	Historical video accessed successfully on timeline and with correct messaging for empty areas of timeline.

### 6.14.3.5 Fixes

Issue ID	Description
AIR-25800	Changing camera resolution no longer erroneously issues Failed to change live view error with null reference exception.

## Version 6.14.3.4

### Fixes

#### 6.14.3.4 Fixes

Issue ID	Description
AIR-25781	AXIS T8311 Joystick working correctly with Symphony

## Version 6.14.3.3

### New Features

#### 6.14.3.3 New Features

Issue ID	Description
AIR-25732	Support for XTS KBC—601-IP Joystick. For instructions, see <a href="https://www.aimetis.com/Xnet/KB/KBArticleView.aspx?ID=10375">https://www.aimetis.com/Xnet/KB/KBArticleView.aspx?ID=10375</a>

### Fixes

#### 6.14.3.3 Fixes

Issue ID	Description
AIR-25714	Lost camera connection alarms displayed correctly.
AIR-25753	AXIS T8310 Keypad and JogDial modules working correctly.

## Version 6.14.3.2

Private release.

## Fixes

### 6.14.3.2 Fixes

Issue ID	Description
AIR-25712	Map labels are being displayed correctly.

## Version 6.14.3.1

### Fixes

#### 6.14.3.1 Fixes

Issue ID	Description
AIR-25681	Historical video playback working correctly.
AIR-25688	Erroneous high CPU usage by scheduler cleaner resolved.

## Version 6.14.3

(Includes updates from 6.14.2.x releases that were not publicly released.)

### New Features

#### 6.14.3 New Features

Issue ID	Description
AIR-25367	Audio device: Symphony supports Axis C3003E Network Horn Speaker. See <a href="https://www.aimetis.com/Xnet/KB/KBArticleView.aspx?ID=10125">https://www.aimetis.com/Xnet/KB/KBArticleView.aspx?ID=10125</a>

### Improvements

#### 6.14.3 Improvements

Issue ID	Description
AIR-25088	Allow restoration of backup to new machine.
AIR-25159	Health Monitoring automatically enabled for VMS licenses on a maintenance program.
AIR-25418	VE500 Analytic also recognizes new Aimetis Outdoor Object Tracking embedded application on AXIS cameras.
AIR-25426	Support: New LogPackage.exe application will allow users to gather logs from large farms during Support help.
AIR-25632	Historical Video playback now uses less CPU when managing large numbers of cameras.

## Fixes

6.14.3 Fixes	
Issue ID	Description
AIR-20621	If redundant server did not set the "Max Days To Store" to same as the working server, after failover the recorded video will be cleaned using the larger of the values set on the two servers.
AIR-24999	System. ArgumentOutOfRangeException error on Analytics Configuration tab resolved.
AIR-25132	Permissions to access to recorded video working consistently. Note: When View Group right (for Devices, Video Walls and User groups) set to Deny, all the effective permissions for that resource will be Deny. Any explicit permissions set for that resource and anything above it should not be inherited by any resources beneath it.
AIR-25221	VE150: Counting line totals correct when tracker restarts.
AIR-25251	ALPR: Region detection sensitivity increased. See <a href="#">License Plate Recognition - USA/Canada Region Detection</a> .
AIR-25275	VE180 Outdoor UI parameters are now saved correctly.
AIR-25402	ALPR: Correct relay numbers used for ADAM 6060 with VE410
AIR-25430	RTSP streamer working correctly when camera settings changed on another Symphony client.
AIR-25481	HTTP server host starts successfully.
AIR-25489	ALPR no longer mistakes Kuwait for Bahrain (and vice versa).
AIR-25493	ALPR works with VXVD4 PCIE devices again.
AIR-25502	Client dewarps Samsung SNF-8010 camera image properly.
AIR-25513	Setup Wizard no longer tries to set the database recovery model on existing databases.
AIR-25515	Symphony successfully imports AXIS Q6042 features from file.
AIR-25552	Prevent unnecessary failover.
AIR-25570	P2000 Access Control successfully reconnects to Symphony.
AIR-25588	Starting/stopping recording no longer requires "change settings" permission.
AIR-25620	Symphony Automatic upgrades installers now cleaned after install completes.
AIR-25625	Axis encoder with PTZ control works correctly with video analytics.
AIR-25635	Client no longer disconnects when server gets very busy.

## Version 6.14.2.4 (private release)

### New Features

6.14.2.4 New Features	
Issue ID	Description
AIR-25603	Symphony supports SAN failover.

### Fixes

6.14.2.4 Fixes	
Issue ID	Description
AIR-25604	Frame dropping issue resolved for two streams set at high and low FPS.

## Version 6.14.2.3 (private release)

### Improvements

6.14.2.3 Improvements	
Issue ID	Description
AIR-25585	Produce lost connection notification alarm for I/O devices.

### Fixes

6.14.2.3 Fixes	
Issue ID	Description
AIR-25528	ALPR: Tracker no longer loses connection when the Map Label table is updated.
AIR-25573	ALPR: License plate no longer erroneously deleted when analysis queue time is longer than display plate time.
AIR-25574	Relay checkbox in analytics configuration no longer disabled after selecting a new picture.
AIR-25575	VE410 Motion Detection correctly disabled when motion detection algorithms are disabled.
AIR-25576	ALPR continues to work with FXVD4 PCIE devices.
AIR-25592	ALPR: License plate decoration correctly fades from video panel and Camera Tree displays correct color based on activity.
AIR-25594	ALPR: Partial license plates no longer reported.

## Version 6.14.2.2 (private release)

### Fixes

6.14.2.2 Fixes	
Issue ID	Description
AIR-25505	High CPU usage issues resolved.

## Version 6.14.2.1 (private release)

### Improvements

6.14.2.1 Improvements	
Issue ID	Description
AIR-25252	Support for ONVIF Profile S auxiliary commands.

### Fixes

6.14.2.1 Fixes	
Issue ID	Description
AIR-25253	Map editor working optimally.
AIR-25254	Object contrast slider control option displayed correctly for VE180 analytic in Outdoor Fast background model setting.

## Version 6.14.2

Uses Device Pack 1.0.29.1.

### New Features

6.14.2 New Features	
Issue ID	Description
AIR-16697	Support for Tyco Software House C-CURE access control.
AIR-24645	Rule icon in Maps displays rule name and ID on mouse hover (settings required in acc.ini). For details, see <a href="#">KB article</a> .



AIR-24756	Decorations options enhanced: Date and Time, Camera name and ID can all be moved to the Top or Bottom of the video screen using <b>TimeLocation</b> and <b>NameLocation</b> per camera settings in Manual Configuration Editor. (Can also be set at server or global levels). See <a href="#">KB Article</a> . New options to show date and time separately appears in the Client Settings. <b>View &gt; Settings &gt; Video tab &gt; Default Video Decorations section.</b>
AIR-25183	Improved RTSP streaming.

## Improvements

### 6.14.2 Improvements

Issue ID	Description
AIR-19086	Various improvements to Health Monitoring.
AIR-24760	User can pause camera tour if preset detects an alarm. To enable, see <a href="#">KB Article</a> .
AIR-24178	License plates now hidden if user does not have permission to see them.
AIR-24651	Updated US LPR.
AIR-24681	User Interface and Help translated into Arabic.
AIR-24760	Can now pause camera tour when alarm occurs.
AIR-24894	Polish translation updated for interface.
AIR-24910	ALPR Installer upgrades properly.
AIR-24924	View Detailed Events now shows Maximum Storage Days settings changes.
AIR-24933	Tracker ID column now used when importing cameras. For cameras with specified ID already in Symphony, new ID assigned on import.
AIR-25054	Faster detection now in VE180 outdoor analytic.
AIR-25145	LogPackage.exe (a tool for gathering Symphony logs) now part of installation. Located in Symphony\ <b>_bin</b> folder.
AIR-25179	Alarm emails: HTTP/HTTPS link provided in email and attached JPEGs contain configured decorations. For details, see <a href="#">KB Article</a> .

## Fixes

### 6.14.2 Fixes

Issue ID	Description
AIR-12447	Watermarking working correctly. For details, see <a href="#">KB Article</a> .
AIR-15836	Cursor focus corrected for Alarm popup.
AIR-23969	Correct camera status (Off) displayed in Camera Tree when camera stopped.
AIR-24392	Trackers not crashing on dropped frames.
AIR-24632	Edge storage historical JPEGs showing correct date.
AIR-24789	Webpage with hyphen in name now shows successfully in Symphony.

**6.14.2 Fixes**

Issue ID	Description
AIR-24805	Symphony User PTZ Priority corrected to editable setting when system part of AEM.
AIR-24806	Symphony User Manage Rules option correctly set to enable when system part of AEM.
AIR-24807	General Settings dialog box corrected to properly display Video Playback section when interface resized.
AIR-24809	Gallagher access card and DIO alarms correctly appearing in Timeline.
AIR-24801	Auto-complete protocol (HTTPS://) added for Setup Wizard connection to AEM.
AIR-24818	Fix implemented for video cards anomalous video rendering issues.
AIR-24820	Symphony update schedule correctly based on and displayed as local time after joining AEM.
AIR-24821	Clicking Live button on video panel successfully launches live video without object reference error.
AIR-24829	Enterprise Management Service starts properly after passphrase change.
AIR-24844	VE180 Analytic successfully launches configuration dialog box with error.
AIR-24882	SMS alerts working correctly.
AIR-24886	Camera connection password length clarified. For details, see <a href="#">KB article</a> .
AIR-24908	Notification emails now appearing in correct language.
AIR-24925	Multiview panels loading correctly after client restart.
AIR-24929	Historical playback working successfully for long duration.
AIR-24931	Web client successfully displays video stream with new or old Bosch decoders.
AIR-24935	Reserved group names synchronized correctly between AEM and Symphony Server when a language other than English is used when Symphony Server is installed.
AIR-24960	Tools: PrintFootageFile.exe and PrintAiraFile.exe running successfully.
AIR-24961	OnPTZUnlock functioning correctly. For details, see <a href="#">KB article</a> .
AIR-24963	Maps and Map Editor working correctly.
AIR-25022	“Dropping frames due to insufficient processing resources” issue resolved.
AIR-25023	Federated Service Client works properly with proxy servers.
AIR-25030	Reports and Report Manager load successfully.
AIR-25040	Cameras with dual streams running consistently without erroneous restarts.
AIR-25081	Gallagher card alarm and digital input alarm correctly indicated in timeline.
AIR-25083	VE500 connected successfully to AOMD on Axis Q1615.
AIR-25098	Exporting video with Axis M3027 Quad View dewarping now works correctly.
AIR-25099	Axis A1001 successfully raises alarms.
AIR-25129	VE410 analytic working correctly after base port change.
AIR-25136	AXIS audio DLL correctly included in exported Symphony Player files.
AIR-25148	PT091 processing correctly on alarm.
AIR-25155	Icons and links on maps functioning correctly. No longer appearing multiple times.
AIR-25165	Able to export video successfully without exception error.

### **6.14.2 Fixes**

<b>Issue ID</b>	<b>Description</b>
AIR-25169	PTZ camera stays in correct position when tour disabled and set to stay on unlock.
AIR-25172	Symphony RTSP streaming working correctly when streaming HD.

## Version 6.14.1.3 (private release)

### Fixes

6.14.1.3 Fixes	
Issue ID	Description
AIR-25177	Gallagher access events correctly appearing in Timeline.

## Version 6.14.1.2

### Fixes

6.14.1.2 Fixes	
Issue ID	Description
AIR-25040	Camera trackers running correctly without problem of continuous restarts.

## Version 6.14.1.1

### Fixes

6.14.1.1 Fixes	
Issue ID	Description
AIR-24959	Reserved group names synchronized correctly between AEM and Symphony Server when a language other than English is used when Symphony Server is installed.

## Version 6.14.1

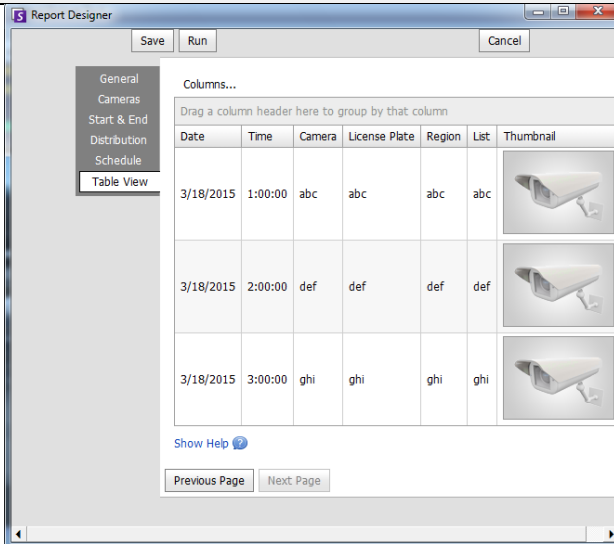
Uses Device Pack 1.0.27.1.

### New Features

6.14.1 New Features	
Issue ID	Description
AIR-22208	New report type in Reports: LPR Report. Lists dates, time, camera, license plate, region, list, and thumbnail image.

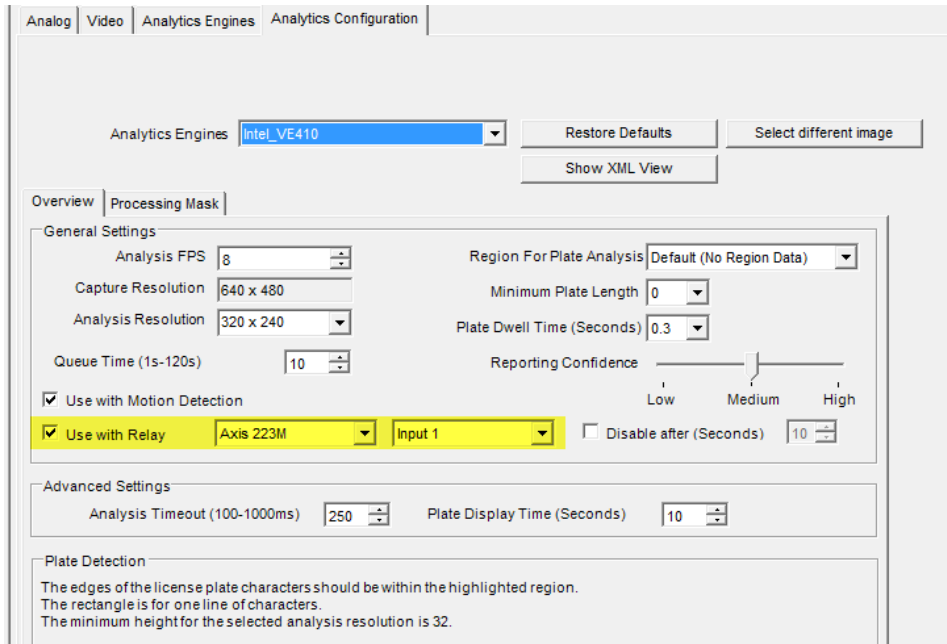
6.14.1 New Features

Issue ID Description



AIR-23094 New security configuration to restrict viewing historical video.

AIR-24627 LPR video analytic can be enabled by I/O.



AIR-24761 Last read license plate displayed on map.

## Improvements

6.14.1 Improvements	
Issue ID	Description
AIR-24684	AEM: URL address simplified for Symphony Setup Wizard user configuration.
AIR-24690	AEM: Rights that are centrally managed by AEM now marked as read-only in Symphony.
AIR-24779	Maximum fence size in rule increased.

## Fixes

6.14.1 Fixes	
Issue ID	Description
AIR-24241	Symphony manager correctly restarting services on server.
AIR-24682	Renaming a farm persists across Client reloads.
AIR-24683	Fixed Symphony writing issue when looping video close to real time.
AIR-24687	Live video timestamp issues related to 2015 changes in day light savings time dates in Brazil resolved.
AIR-24693	Switch view on alarm returns video panel to correct state.
AIR-24721	Symphony editing/saving map in efficient time.
AIR-24723	Setup Wizard successfully applies database schema, completing farm setup in offline mode.
AIR-24724	Setup Wizard completes successfully during restart of services
AIR-24726	Access control alarms triggered correctly on non-master server
AIR-24748	Setup Wizard completes correctly when database down and AI Authentication and AI Watchdog services correctly starting
AR-24728	LPR: Symphony upgrade successfully working

# Version 6.14.0.2

Uses Device Pack 1.0.26.1.

## Fixes

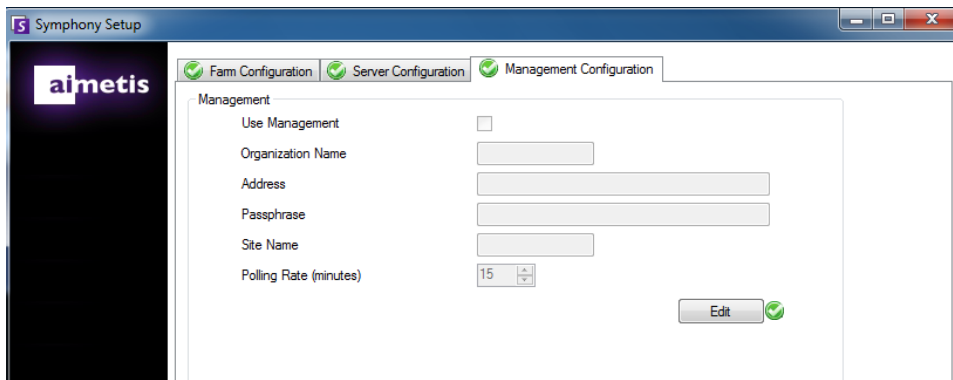
6.14.0.2 Fixes	
Issue ID	Description
AIR-24728	Setup Wizard completes successfully with Services starting

# Version 6.14

Uses Device Pack 1.0.26.1.

## New Features

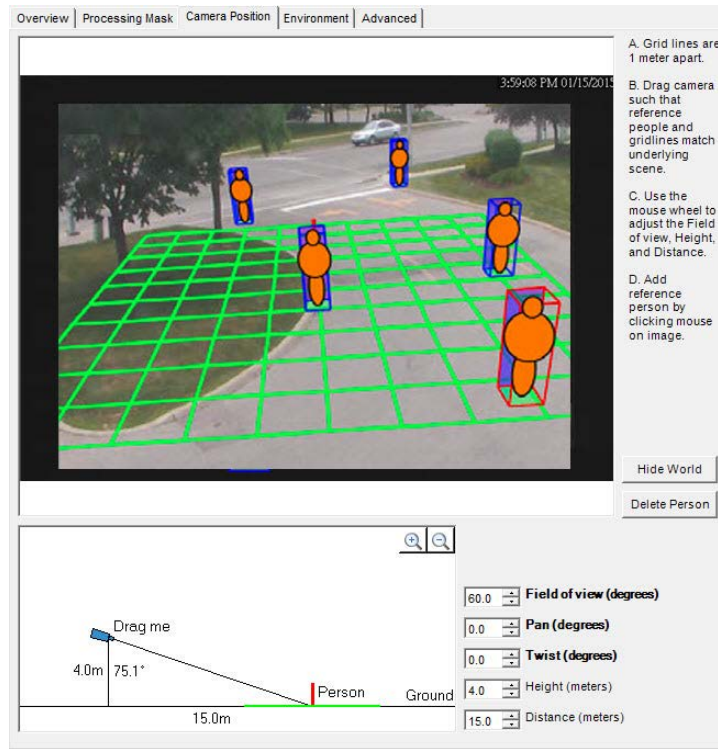
6.14 New Features	
Issue ID	Description
AIR-19272/ AIR-24419	Axis Access Control device integration added (A1001). The <b>Manufacturer</b> drop-down in the Access Device Dialog window now includes <b>Axis Access Control</b> .
AIR-20887	Automatic Server Updates: When enabled, Symphony automatically checks for updates daily. Updates can also be manually checked from the Aimetis website or from a custom location. Updates can be installed immediately or at a specific time.
AIR-23714 AIR-23716 AIR-24153 AIR-24155 AIR-24156 AIR-24158 AIR-23714 AIR-23715	Symphony Servers can now be managed via the Aimetis Enterprise Manager (AEM), which is an SSL-secure, web-based application for Information Technology (IT) professionals. It enables system administrators to centrally manage Aimetis Symphony server settings and backups, as well as monitor server health and performance, across large, geographically-distributed video deployments. Once a site joins an enterprise, the site queries that enterprise for updates and applies them locally as needed.



Support for maintenance settings in Symphony from centrally managed settings in AEM.  
 Support for centrally managed general settings in Symphony through AEM.

## 6.14 New Features

Issue ID	Description
	See AEM online documentation.
AIR-24079	<b>BETA release</b> New Outdoor Tracker. The VE500 video analytic interface is displayed only if Symphony has detected the Aimetis VE500 analytic software on your camera.



AIR-24100	Changes to LPR – managing lists, importing license plates, creating rules, search LPR content menu. For details, see <a href="#">Aimetis Automatic License Plate Recognition (ALPR) Installation Guide</a> .
AIR-24102	
AIR-24103	
AIR-24101	Map labels – indicate I/O status on maps.
AIR-24409	Server health information is now available in Aimetis Enterprise Manager for servers with active Maintenance contracts.
AIR-24419	Added VE510 OPC Metadata Detection.

## Improvements

### 6.14 Improvements

Issue ID	Description
AIR-19086	Health Monitoring improvements implemented, including converting health packets to TCP with one per server versus UDP per tracker, camera availability, recording status, and additional server information.
AIR-24406	
AIR-24407	



## 6.14 Improvements

Issue ID	Description
AIR-24408 AIR-24409	
AIR-23104	Immervision integration updated.
AIR-23107	Progress bar for VE180 Camera Position Auto-Calibration added.
AIR-23898	Improvements made to VE420 face tracking and matching, which results in a higher percentage of face detection and better tracking.
AIR-24402	TeamViewer 10 support.

## Fixes

### 6.14 Fixes

Issue ID	Description
AIR-16125	Custom browser page correctly displays Aimetis website when URL fails.
AIR-22410	Resolved Access Device issues on multi-farm environments, modifying options in user interface, triggering alarms, and correct server name displayed.
AIR-23107	Progress bar displayed correctly for VE180 analytic camera position auto-calibration.
AIR-23472	Farm/Server status translated into Traditional Chinese.
AIR-23499	<b>Server &gt; Configuration &gt; Maintenance Settings:</b> Changes to the <b>Begin</b> and <b>End</b> times in the Client Updates section are now correct.
AIR-23513	<b>Server &gt; Configuration &gt; Maintenance Settings:</b> The update time for the server can now be changed.
AIR-23849	Possible to delete rules consecutively in Server Configuration without Application Message indicating errors.
AIR-23924/ AIR-24205	Vivotek Fisheye: The camera position no longer changes when pressing play/pause.
AIR-23935	Navigation working correct for activity in timeline for PT091 auto tracked objects.
AIR-23955	Invalid PIN alarm event working correctly for AXIS access control.
AIR-23967	The generic panoramic de-warped image from the Axis M3007 camera displayed in Symphony now correctly matches the image in device web view.
AIR-23970	AI AxisPACSListener successfully starts during Setup Wizard.
AIR-23978	.avi video formats are now exported in the same fps as .aira video formats.
AIR-24018/ AIR-24019	User can now successfully cancel video export.
AIR-24020	LPR: Unmute camera button now appears in interface only when user has permission and camera set for Audio In/Audio Out.
AIR-24021	Export video feature works correctly for conditions where no footage is available or no footage is available for current date/time.
AIR-24028	Symphony Player now works correctly when viewing files with audio from search results.

**6.14 Fixes**

<b>Issue ID</b>	<b>Description</b>
AIR-24060	Symphony can now read the port type after Axis Q1615 modifies the digital I/O.
AIR-24061	The Browser URL for Symphony Client can now be changed.
AIR-24062	The heat map report now contains correct and complete data for recorded days.
AIR-24132	Multiple ADAM devices on one server now work correctly following a failover.
AIR-24181	Cameras no longer incorrectly display "Off" status.
AIR-24206	Directory paths saved correctly after changing client settings in Client interface
AIR-24208	Deleting "middle" stream handled correctly now. No longer affects video from other streams.
AIR-24245	Video is now displayed when audio is enabled with multistream.
AIR-24252	Audio is now recorded when recording 59-60 fps streams.
AIR-24330	RTSP streaming server now supports multiple streams.
AIR-24395	VE180 camera calibration now writes the proper aspect ratio.
AIR-24344	Resolved web client logging in issue.
AIR-24403	The system no longer stalls or fails when performing batch video exports.
AIR-24481	Encode channels are now selected by default.
AIR-24535	ADAM device working correctly on all server farms.
AIR-24537	Maps displayed correctly in client set to Turkish.
AIR-24540/ AIR-24639	Gallagher 7.20 card events managed properly.
AIR-24546	Fix to permissions for activating security profiles.
AIR-24647	Trackers no longer delayed starting up after restart of Symphony services.