



Software House Integration Guide

Disclaimers and Legal Information

Copyright©2015. All rights reserved.

This material is for informational purposes only. Aimetis makes no warranties, express, implied or statutory, as to the information in this document.

Complying with all applicable copyright laws is the responsibility of the user. Without limiting the rights under copyright, no part of this document may be reproduced, stored in or introduced into a retrieval system, or transmitted in any form or by any means (electronic, mechanical, photocopying, recording, or otherwise), or for any purpose, without the express written permission of Aimetis Corp.

Aimetis may have patents, patent applications, trademarks, copyrights, or other intellectual property rights covering subject matter in this document. Except as expressly provided in any written license agreement from Aimetis, the furnishing of this document does not give you any license to these patents, trademarks, copyrights, or other intellectual property.

Aimetis and Aimetis Symphony are either registered trademarks or trademarks of Aimetis Corp. in the United States and/or other countries.

Portions Copyright© 1993-2015 ARH Inc. Portions of this software are based in part on the work of the Independent JPEG Group.

Contact Us

For the most up-to-date contact information go to www.aimetis.com.

Table of Contents

Configure iSTAR Edge Access Control Integration

Support Version	1
Work Flow.....	1
Task 1: Configure Software House C-Cure 9000 Server for Symphony Access Control Integration	2
Task 2: Configure Symphony for iSTAR Edge Access Control Integration.....	2
Task 3: Select the Event Sources	2
Task 4: Define Rules.....	3
(Optional) Add Sub-devices/Event Sources to a Map.....	3

1

Configure iSTAR Edge Access Control Integration

Support Version

Symphony Product Version	Software House C-Cure 9000 Version
6.14.2 Server and Client	Server and Client

Work Flow

- [Task 1: Configure Software House C-Cure 9000 Server for Symphony Access Control Integration](#)
- [Task 2: Configure Symphony for iSTAR Edge Access Control Integration](#)
- [Task 3: Select the Event Sources](#)
- [Task 4: Define Rules](#)
- [\(Optional\) Add Sub-devices/Event Sources to a Map](#)

Task 1: Configure Software House C-Cure 9000 Server for Symphony Access Control Integration

1. From the Software House C-Cure 9000 Main menu, select **Config>System**. Enter your password if prompted. The System Configuration window opens.
2. Select **Remote Server** and click **Add**. The Software House C-Cure 9000 Remote Server dialog box opens at the **General** tab.
3. Enter the following to define a remote receiver:
 - IP Address = address of Symphony server designated as Software House C-Cure 9000 Event receiver
 - Port = 50024
 - Protocol = "HTTP Post XML Protocol"
4. Select both the **Receive messages from this server** and **Transmit messages to this server** check boxes.
5. Click **Apply** to save your settings and **OK** to return to the System Configuration window.

Task 2: Configure Symphony for iSTAR Edge Access Control Integration

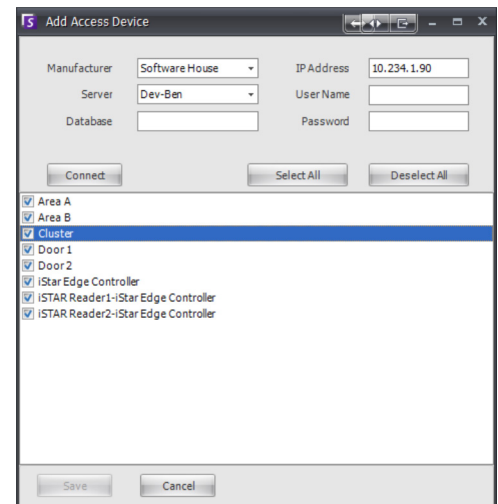
1. From the PC designated to run a Symphony Server, ping the IP address of the PC running Software House C-Cure 9000 server.
2. Install a Symphony Server and Client.
3. If enabled, the "Software House C-Cure 9000" Access Control Provider/Server will listen on TCP/IP port 50,024 (via **AI InfoService**).
4. Launch Symphony Client and wait for the connection to the designated Symphony Server/Farm to complete.
5. From **Server** menu, select **Add Access Device**.
6. Select "iSTAR Edge" as Access Control provider. The **Connect** button and other input fields (IP, User Name, Password and database) will be enabled.

Set IP Address = The IP address of the PC running the Software House C-Cure 9000 server software.

Set User Name = sa

Set Password = Master 2000 (with the space)

Database field = leave empty

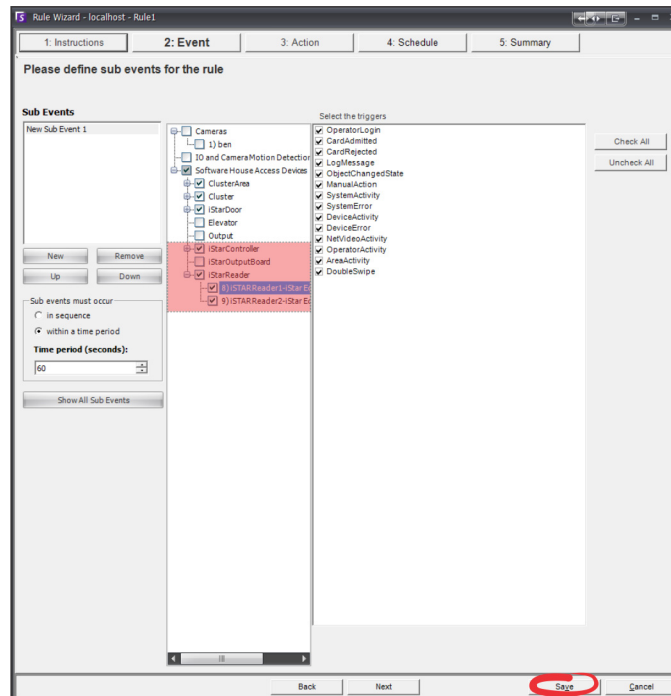


Task 3: Select the Event Sources

1. Click **Connect** to see a list of devices/event sources. Select all the sources for which you want to receive events.
2. Click **OK** to save the current iSTAR Edge Access Control provider settings.
If a different Access Control Provider was selected (or the Access Control was configured for the first time) prior to switching to iSTAR Edge, **AI InfoService** will restart automatically so as to load the newly selected iSTAR Edge provider. (Symphony Access Control functionality works with only one provider at any time).
3. Wait for the devices to be displayed in the main device tree.

Task 4: Define Rules

1. From the **Server** menu, select **Configuration**. The Server Configuration dialog box opens.
2. Click **Rules** and create a new rule.
3. Select at least one iSTAR Edge-related Event Source (all the actual sources are grouped by Source category) and at least one event for that Source (events are also grouped by Source category).
4. Select a particular camera output or all cameras.
5. Save the new rule.



(Optional) Add Sub-devices/Event Sources to a Map

You can add one of the sub-devices or events related to the iSTAR Edge rule as an icon on a map. The icon will flash or change color depending on the triggered event. Consult the Symphony 6.14 online help Maps section for instructions.